

# INSTALLATION DETAILS

## HKD wall element

- HKD KG wall element
- HKD KG2000 wall element



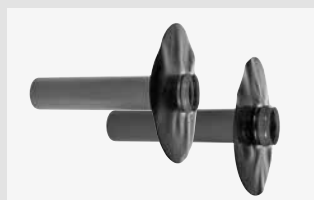
HKD KG wall element / HKD KG2000 wall element



HKD KG / KG2000 double socket



HKD KG / KG2000 plug-in flange



HKD KG / KG2000 flange pipe



HKD slip-on flange

### Assembly

- Set up first formwork side.
- Lay the reinforcement and cut out a small area around the mounting position. Regarding the concrete cover observe DIN 1045.
- Remove the assembly aid from the wall element and nail it to the required position on the formwork.
- Push the pipe penetration completely onto the assembly cover nailed to the formwork.
- Mount the second assembly cover.
- Install formwork sprayed with formwork oil. The pipe penetration must not be sprayed with formwork oil.
- Fill layers of concrete into the formwork and compact carefully.
- After expiration of the minimum formwork periods according to DIN 1045 strip the formwork and remove the assembly cover on both sides of the pipe penetration.
- Insert lip seals into the sleeves of the wall duct.
- When connecting the other pipelines, lubricant must only be applied to the pointed end of the pipes to be connected. The chamfered pipe ends must be pushed completely into the sleeve and then pulled out 3 to 5 mm.

### Installation instructions for HKD KG / HKD KG2000 double socket

- Suitable for use in pump sumps or light shafts, also for thin-walled components.

### Installation details for HKD KG / HKD KG2000 plug-in flange

- Install the flange pipe making sure the foil flange is flush with the surface of the sealing wall.
- Insert the plug-in flange into the wall element already concreted flush with the formwork making sure the foil flange runs flush with the sealing wall on the surface.
- Glue the EPDM foil flange to the wall using a suitable adhesive (e.g. APP-PU 50)

### Installation instructions for HKD slip-on flange

- Push the slip-on flange over the KG or KG2000 pipe already installed in the wall making sure the foil flange runs flush with the sealing wall on the surface.
- Glue the EPDM foil flange to the wall using a suitable adhesive (e.g. APP-PU 50)

### Accessories (optional)

- APP-PU 50 (polyurethane adhesive)

DOYMA products are continuously being further developed. Technical changes will be performed without prior notice. **Further info at [www.doyma.de](http://www.doyma.de)**

### DOYMA GmbH & Co

SEALING SYSTEMS  
FIRE PROTECTION SYSTEMS

Industriestr. 43-57  
28876 Oyten

Phone: 0 42 07/91 66-300  
Fax: 0 42 07/91 66-199

[www.doyma.de](http://www.doyma.de)  
[info@doyma.de](mailto:info@doyma.de)